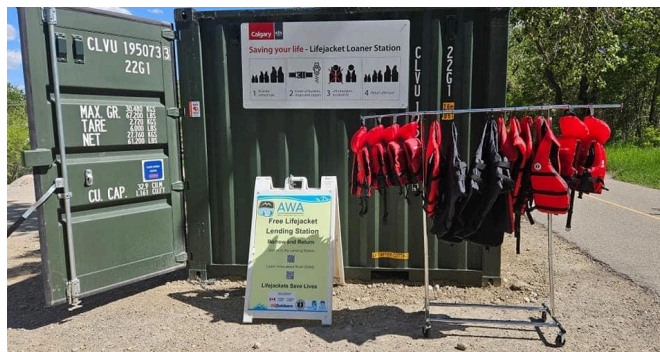




# Harvie Passage Whitewater Park - PFD Lending Station 2025

*End of Season Report*





## Overview

The Alberta Whitewater Association's Harvie Passage PFD lending Station operated for its second year in 2025. While we don't have emergency response data, it seems to have been a quiet year at Harvie and we have had no deaths since the PFD lending station was installed in 2024 (4 deaths 2011-2023). Overall, the culture seems to be improving to one where the norm is to wear pfd's. This year's wear rate was 62%

The station was open weekends in June, and then daily from July 1 to August 31, 2025. Three summer students opened the station at 10a or 11a daily and closed at 8p or 9p daily with exceptions for weather below 15 degrees.

“

**We are proud to be setting up a culture of safety and welcoming at Harvie Passage. Through continued presence of PFD staff, City staff, and river user organizations, we can create a safe place for Calgarians to enjoy.**

**-Mike Holroyd-**

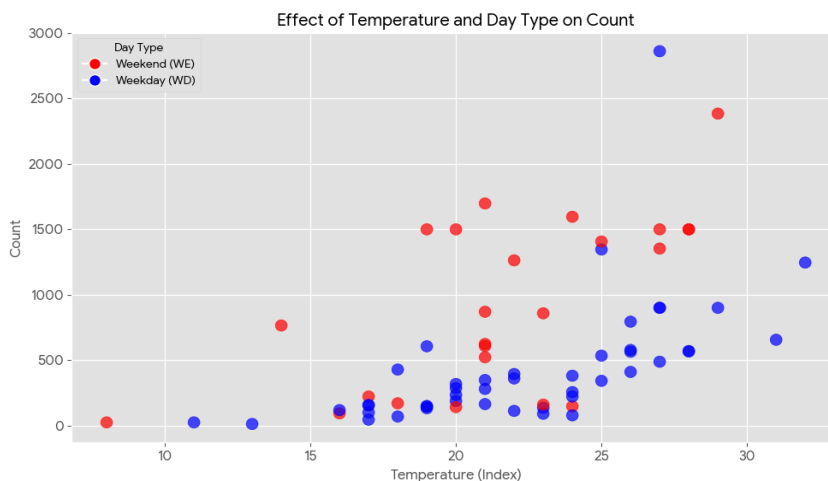
”

---

## Facility Use.

Staff recorded over 18,000 people at Harvie in the summer of 2025 during their daily counts.

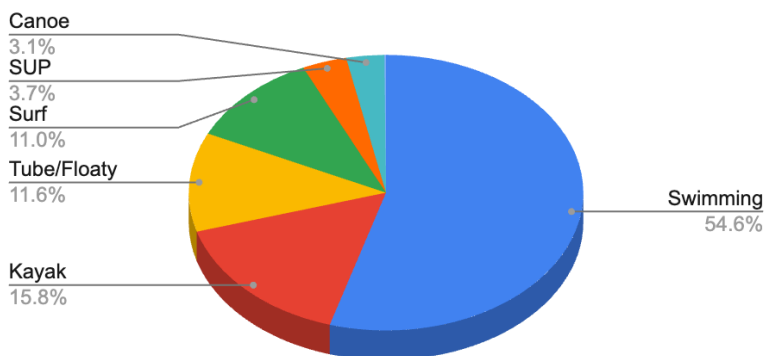
An average of 2.6 counts per day were done. If extrapolated, to turn over every 2hrs, the facility count is around 42,000. The average is 620 people per day with a range of 24 to 2862 at any given time. The two main factors affecting visitation are weather and day of week.



Roughly 11% of people at Harvie were in or on the water during the counts, while the rest were sitting on the rocks or walking/biking on the gravel pathway. The in-water use breakdown can be seen below.

Of the river users Canoes and Kayaks had better than 97% PFD wear rate. SUPs, Rafts and Floaties were at 74% wear rate. Swimmers were at 57% wear rate (this group is the most concerning). Surfer PFD usage is minimal due to the substantial floatation of the wetsuit & board and the need to actively swim after every surf.

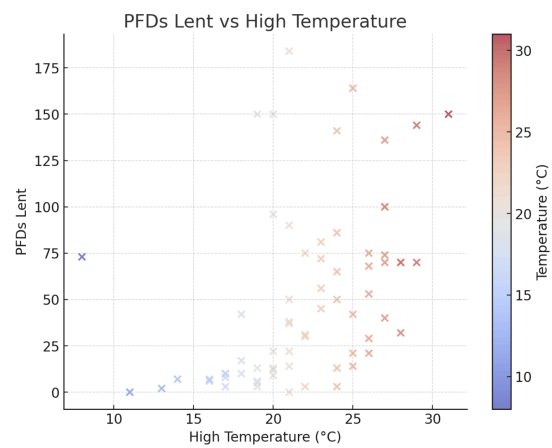
### Harvie Passage Water Users



## PFDs Lent

Staff lent out over 3500 PFDs. 67% were Adult sizes and 33% Child sizes. Anecdotally, staff commented that around 70% are new Canadians or visible minorities. Staff fielded many questions about the facility and safety.

Loss of PFDs due to theft remains an issue. In 2025 we lost about 40 PFDs compared to 30 in 2024. That represents about a 1% loss per use, which is in line with typical retail shrinkage. Most that go missing are adult sizes.



## Financial Support

AWA hired three staff on Canada Summer Jobs grants, and purchased 50 new PFDs this year supported by Paddle Alberta. DeLauretis Wealth Management donated funds towards staffing.



Government  
of Canada

Gouvernement  
du Canada



**DeLauretis**  
**Wealth Management Inc.**  
Financial, Investments & Insurance Planning





River Users